

Injury attendances to Wythenshawe Hospital Emergency Department

July 2011 to June 2012

This report summarises recorded injury attendances to Wythenshawe Hospital Emergency Department (ED) between July 2011 and June 2012.

Between July 2011 and June 2012 there were 13,842 injury attendances to Wythenshawe Hospital ED. Males accounted for over half (54%) of all attendances. The month with the highest attendances was May (n=1,435) with February having the lowest attendances (n=719) (**Figure 1**). Falls (54%) accounted for the highest proportion of injuries, followed by sports injury (17%), road traffic collision (RTC) (14%), assault (7%), and burns and scalds (4%) (**Table 1**).

For all injuries the highest proportion of attendances were for persons aged 20 to 34 (24%) and 5 to 19 (23%) years (**Figure 2**). Three in ten (30%) fall attendees were aged 65 or over. Almost four in ten (38%) sports injury attendees were aged 5 to 19 years or 20 to 34 years. Four in ten (40%) RTC attendees were aged 20 to 34 years (**Figure 3**).

Table 2 shows the ethnicity of injury attendees to Wythenshawe Hospital ED. The large majority (88%) were white.

The disposal of a patient can give an indication of the severity of the injuries sustained. Almost two-thirds (64%) of attendees were discharged, 17% were referred and 16% were admitted to hospital (**Table**

3). Over four-fifths (84%) of RTC attendees were discharged. Almost three in ten (29%) of burns and scald attendees were referred for follow-up treatment. Over a third (36%) of deliberate self-harm (DSH) attendees were admitted (**Table 4**).

Table 5 shows the arrival methods of attendances at Wythenshawe Hospital ED. Over a quarter (26%) arrived by ambulance.

Table 6 shows the incident location of injury attendances. Almost three in ten (28%) occurred in the home whilst almost one in ten (8%) occurred in a public place.

Table 7 presents data for assault attendances to Wythenshawe Hospital ED. There were 929 assault attendances recorded between July 2011 and June 2012. Seven in ten (70%) were male and under half (46%) were aged 20 to 34 years. Three in ten (31%) arrived by ambulance.

Figure 1: Wythenshawe Hospital ED: Total injury attendances by gender and month, July 2011 to June 2012

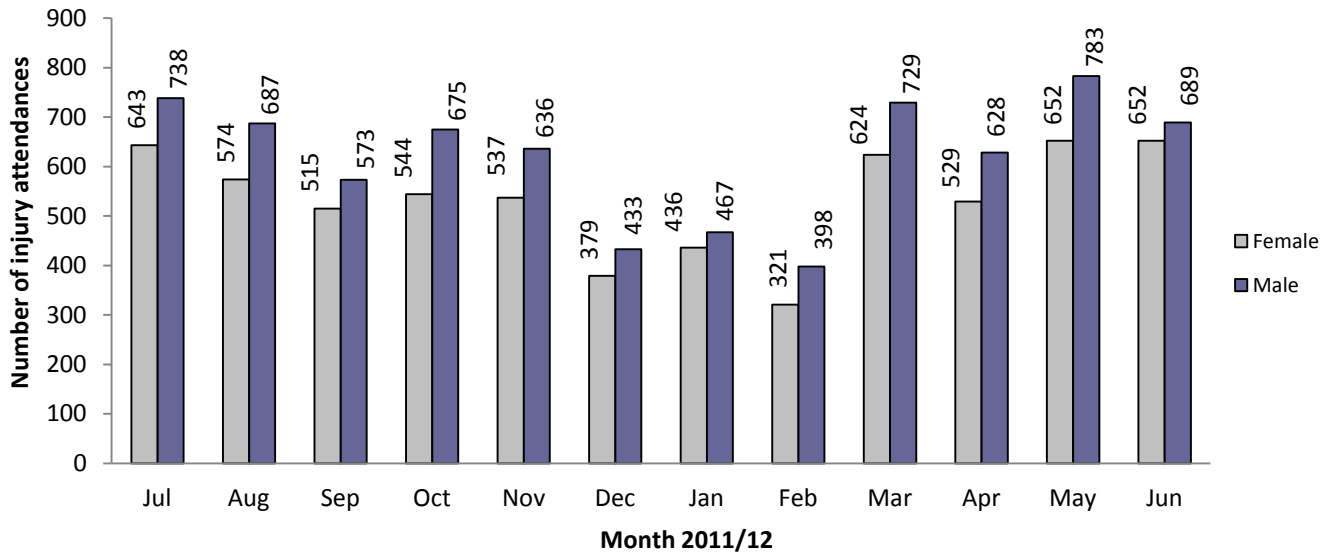
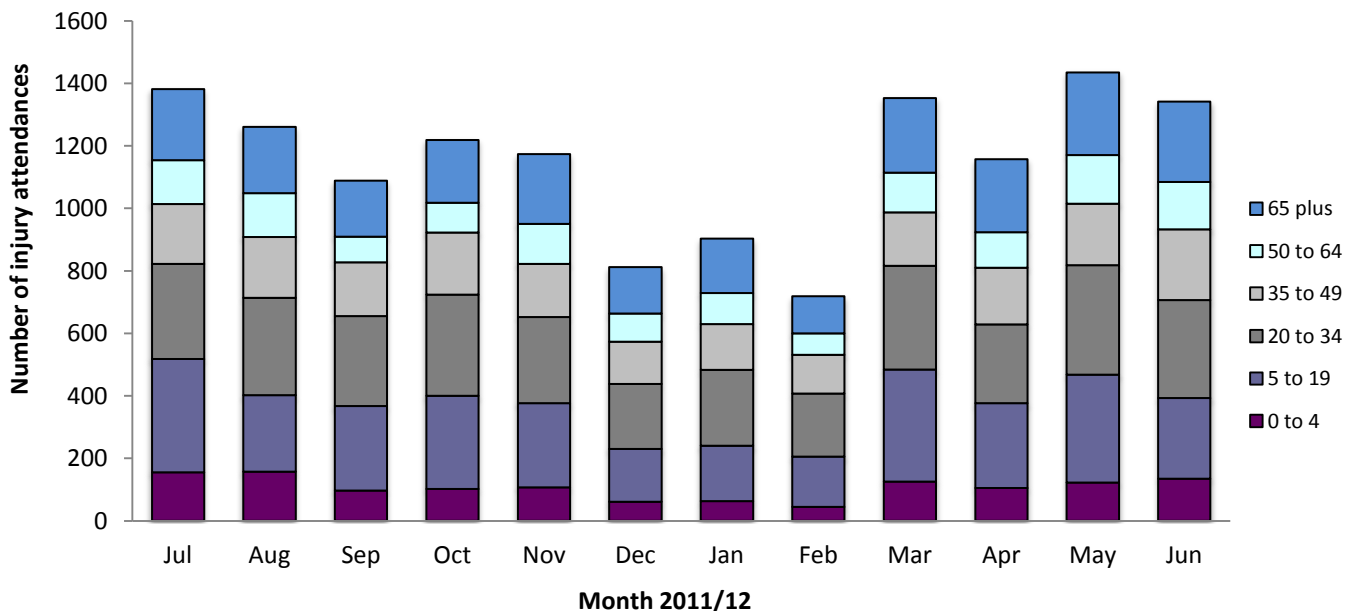


Table 1: Wythenshawe Hospital ED: Total injury attendances by injury group and month, July 2011 to June 2012^{1*}

| Injury group | Jul | Aug | Sep | Oct | Nov | Dec | Jan | Feb | Mar | Apr | May | Jun | Total | % |
|------------------|-------------|-------------|-------------|-------------|-------------|------------|------------|------------|-------------|-------------|-------------|-------------|--------------|------------|
| Fall | 808 | 810 | 510 | 593 | 628 | 315 | 438 | 257 | 819 | 664 | 819 | 828 | 7489 | 54 |
| Sports injury | 216 | 125 | 275 | 248 | 208 | 158 | 166 | 160 | 211 | 183 | 249 | 165 | 2364 | 17 |
| RTC | 195 | 133 | 149 | 177 | 170 | 215 | 164 | 182 | 139 | 126 | 159 | 166 | 1975 | 14 |
| Assault | 71 | 92 | 80 | 106 | 95 | 59 | 61 | 43 | 81 | 84 | 92 | 65 | 929 | 7 |
| Burns and scalds | 60 | 57 | 50 | 67 | 47 | 35 | 44 | 49 | 53 | 49 | 48 | 63 | 622 | 4 |
| DSH | *** | *** | *** | *** | *** | *** | *** | *** | *** | *** | *** | *** | 438 | 3 |
| Other injury | *** | *** | *** | *** | *** | *** | *** | *** | *** | *** | *** | *** | 25 | 0 |
| Total | 1381 | 1261 | 1088 | 1219 | 1173 | 812 | 903 | 719 | 1353 | 1157 | 1435 | 1341 | 13842 | 100 |

*Percentages may not add up to 100 due to rounding.

Figure 2: Wythenshawe Hospital ED: Total injury attendances by age group and month, July 2011 to June 2012



¹ Please note that all numbers less than five have been suppressed in line with patient confidentiality and if there is only one number <5 in a category then two numbers will be suppressed at the next level.

Figure 3: Wythenshawe Hospital ED: Total injury attendances by age group and injury group (excluding other injury), July 2011 to June 2012

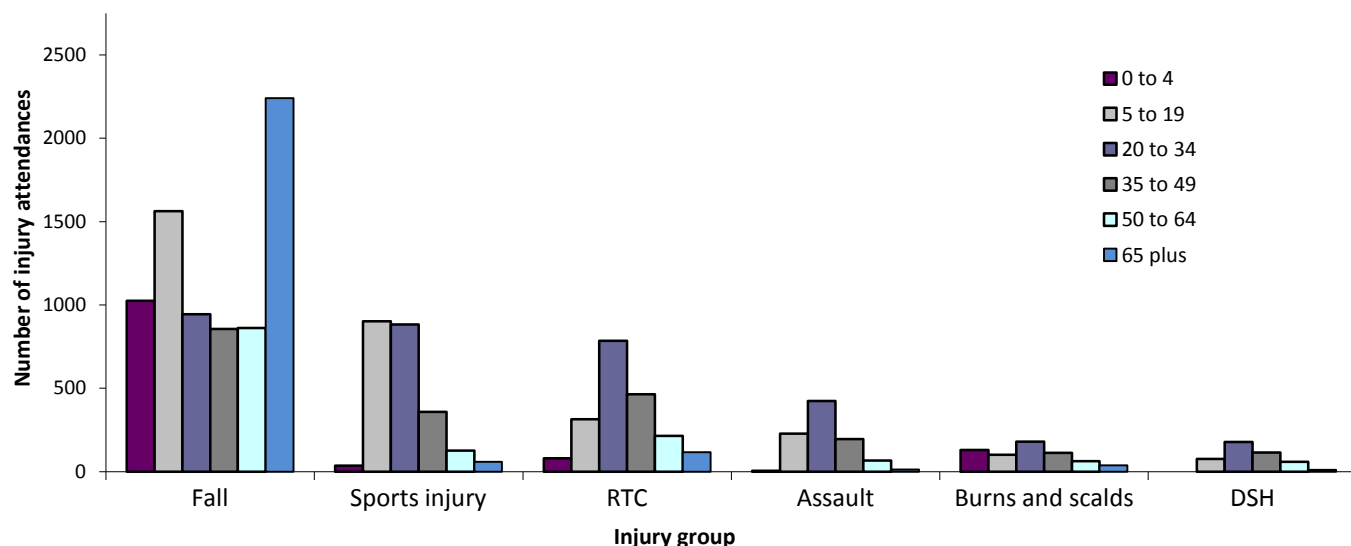


Table 2: Wythenshawe Hospital ED: Total injury attendances by ethnicity and month, July 2011 to June 2012²

| Ethnicity | Jul | Aug | Sep | Oct | Nov | Dec | Jan | Feb | Mar | Apr | May | Jun | Total | % |
|----------------------------|-------------|-------------|-------------|-------------|-------------|------------|------------|------------|-------------|-------------|-------------|-------------|--------------|------------|
| White | 1182 | 1116 | 959 | 1081 | 1036 | 697 | 786 | 624 | 1209 | 1027 | 1269 | 1182 | 12168 | 88 |
| Not known | 81 | 52 | 41 | 58 | 36 | 34 | 35 | 41 | 55 | 49 | 58 | 64 | 604 | 4 |
| Pakistani | 33 | 21 | 20 | 15 | 21 | 24 | 19 | 17 | 25 | 22 | 37 | 28 | 282 | 2 |
| Mixed | 35 | 21 | 16 | 24 | 24 | 11 | 18 | 11 | 22 | 28 | 27 | 16 | 253 | 2 |
| Black | 20 | 7 | 12 | 14 | 17 | 20 | 15 | 8 | 8 | 14 | 12 | 14 | 161 | 1 |
| Any other ethnic group | 9 | 17 | 14 | *** | 12 | 8 | 18 | 9 | 13 | *** | *** | 15 | 127 | 1 |
| Indian | 10 | 17 | 11 | *** | 12 | 6 | 5 | *** | 6 | 8 | 12 | 10 | 105 | 1 |
| Any other Asian background | *** | 6 | 7 | 11 | 10 | 10 | 6 | 6 | 11 | *** | 5 | 6 | 82 | 1 |
| Chinese | 8 | *** | *** | 5 | *** | *** | *** | *** | *** | *** | 6 | 6 | 48 | 0 |
| Bangladeshi | *** | *** | *** | *** | *** | *** | *** | *** | *** | *** | *** | 0 | 12 | 0 |
| Total | 1381 | 1261 | 1088 | 1219 | 1173 | 812 | 903 | 719 | 1353 | 1157 | 1435 | 1341 | 13842 | 100 |

Table 3: Wythenshawe Hospital ED: Total injury attendances by method of disposal and month, July 2011 to June 2012^{3*}

| Disposal | Jul | Aug | Sep | Oct | Nov | Dec | Jan | Feb | Mar | Apr | May | Jun | Total | % |
|--------------------|-------------|-------------|-------------|-------------|-------------|------------|------------|------------|-------------|-------------|-------------|-------------|--------------|------------|
| Discharged | 866 | 812 | 679 | 838 | 756 | 541 | 597 | 471 | 848 | 684 | 851 | 848 | 8791 | 64 |
| Referral/follow-up | 229 | 205 | 209 | 171 | 170 | 110 | 153 | 92 | 267 | 213 | 259 | 222 | 2300 | 17 |
| Admitted | 230 | 211 | 159 | 167 | 204 | 124 | 129 | 110 | 187 | 202 | 255 | 224 | 2202 | 16 |
| Other | 56 | 33 | 41 | 43 | 43 | 37 | 24 | 46 | 51 | 58 | 70 | 47 | 549 | 4 |
| Total | 1381 | 1261 | 1088 | 1219 | 1173 | 812 | 903 | 719 | 1353 | 1157 | 1435 | 1341 | 13842 | 100 |

*Percentages may not add up to 100 due to rounding.

Table 4: Wythenshawe Hospital ED: Total injury attendances by method of disposal and injury group, July 2011 to June 2012*

| Disposal | Assault | | Burns and scalds | | DSH | | Other injury | | Fall | | RTC | | Sports injury | | Total | |
|--------------------|------------|------------|------------------|------------|------------|------------|--------------|------------|-------------|------------|-------------|------------|---------------|------------|--------------|------------|
| | n | % | n | % | n | % | n | % | n | % | n | % | n | % | n | % |
| Discharged | 598 | 64 | 308 | 50 | 188 | 43 | 19 | 76 | 4439 | 59 | 1659 | 84 | 1580 | 67 | 8791 | 64 |
| Referral/follow-up | 121 | 13 | 181 | 29 | *** | 8 | *** | 8 | 1295 | 17 | 81 | 4 | 585 | 25 | 2300 | 17 |
| Admitted | 149 | 16 | 65 | 10 | *** | 36 | *** | 16 | 1562 | 21 | 142 | 7 | 124 | 5 | 2202 | 16 |
| Other | 61 | 7 | 68 | 11 | *** | 13 | *** | 0 | 193 | 3 | 93 | 5 | 75 | 3 | 549 | 4 |
| Total | 929 | 100 | 622 | 100 | 438 | 100 | 25 | 100 | 7489 | 100 | 1975 | 100 | 2364 | 100 | 13842 | 100 |

*Percentages may not add up to 100 due to rounding.

² White=Irish, British, other white background; Mixed=white and black, white and Asian, mixed any other; Black=African, Caribbean, other black.

³ Admitted=admitted to ED bed/became a lodged patient of the same health care provider; Discharged=discharged - did not require any follow-up treatment; Referral/follow-up=discharged - follow-up treatment to be provided by GP, referred to ED clinic, referred to fracture clinic, referred to other out-patient clinic, transferred to other health care provider, referred to other health care professional; Other=died in department, left department before being treated, left department having refused treatment, other.

Table 5: Wythenshawe Hospital ED: Total injury attendances by mode of arrival and month, July 2011 to June 2012

| Arrival mode | Jul | Aug | Sep | Oct | Nov | Dec | Jan | Feb | Mar | Apr | May | Jun | Total | % |
|--------------|-------------|-------------|-------------|-------------|-------------|------------|------------|------------|-------------|-------------|-------------|-------------|--------------|------------|
| Not known | 1040 | 905 | 822 | 914 | 846 | 552 | 639 | 487 | 1032 | 858 | 1103 | 1003 | 10201 | 74 |
| Ambulance | 341 | 356 | 266 | 305 | 327 | 260 | 264 | 232 | 321 | 299 | 332 | 338 | 3641 | 26 |
| Total | 1381 | 1261 | 1088 | 1219 | 1173 | 812 | 903 | 719 | 1353 | 1157 | 1435 | 1341 | 13842 | 100 |

Table 6: Wythenshawe Hospital ED: Total injury attendances by location of incident and injury group, July 2011 to June 2012*

| Location | Assault | | Burns and scalds | | DSH | | Fall | | RTC | | Other injury | | Sports injury | | Total | |
|----------------|------------|------------|------------------|------------|------------|------------|-------------|------------|-------------|------------|--------------|------------|---------------|------------|--------------|------------|
| | n | % | n | % | n | % | n | % | n | % | n | % | n | % | n | % |
| Home | 222 | 24 | 298 | 48 | 151 | 34 | 3250 | 43 | 0 | 0 | 9 | 36 | 0 | 0 | 3930 | 28 |
| Sport | 34 | 4 | *** | 1 | *** | 1 | 371 | 5 | 0 | 0 | 0 | 0 | 2364 | 100 | 2778 | 20 |
| Not recorded | 260 | 28 | 195 | 31 | 235 | 54 | 2030 | 27 | 0 | 0 | 8 | 32 | 0 | 0 | 2728 | 20 |
| RTC | *** | 0 | *** | 1 | *** | 0 | 35 | 0 | 1975 | 100 | *** | 4 | 0 | 0 | 2018 | 15 |
| Public place | 221 | 24 | 39 | 6 | *** | 8 | 856 | 11 | 0 | 0 | *** | 4 | 0 | 0 | 1153 | 8 |
| Street | 90 | 10 | *** | 0 | *** | 0 | 327 | 4 | 0 | 0 | 0 | 0 | 0 | 0 | 420 | 3 |
| School/college | 22 | 2 | *** | 0 | *** | 0 | 322 | 4 | 0 | 0 | 0 | 0 | 0 | 0 | 349 | 3 |
| Work | 31 | 3 | 69 | 11 | *** | 0 | 176 | 2 | 0 | 0 | *** | 20 | 0 | 0 | 282 | 2 |
| Another's home | 28 | 3 | 7 | 1 | *** | 2 | 108 | 1 | 0 | 0 | *** | 4 | 0 | 0 | 151 | 1 |
| Bar/Pub | 13 | 1 | 0 | 0 | 0 | 0 | *** | 0 | 0 | 0 | 0 | 0 | 0 | 0 | 24 | 0 |
| Club | *** | 1 | 0 | 0 | 0 | 0 | *** | 0 | 0 | 0 | 0 | 0 | 0 | 0 | 9 | 0 |
| Total | 929 | 100 | 622 | 100 | 438 | 100 | 7489 | 100 | 1975 | 100 | 25 | 100 | 2364 | 100 | 13842 | 100 |

*Percentages may not add up to 100 due to rounding.

Table 7: Wythenshawe Hospital ED: Assault attendances by gender, arrival mode and age group, July 2011 to June 2012

| Injury type | Assault attendees (n=929) | | All injuries % (n=13,842) |
|---------------------|---------------------------|----|---------------------------|
| | n | % | |
| Gender | | | |
| Female | 280 | 30 | 46 |
| Male | 649 | 70 | 54 |
| Arrival mode | | | |
| Ambulance | 282 | 30 | 26 |
| Other | 647 | 70 | 74 |
| Age group | | | |
| 0 - 4 | *** | 0 | 9 |
| 5 - 19 | 228 | 25 | 23 |
| 20 - 34 | 424 | 46 | 25 |
| 35 - 49 | 195 | 21 | 15 |
| 50 - 64 | 66 | 7 | 10 |
| 65 plus | *** | 1 | 18 |

Author: Ian Warren, Published: September 2012

For further information please contact: Val Upton, Centre for Public Health, Research Directorate, Liverpool John Moores University, 2nd Floor, Henry Cotton Building, 15-21 Webster Street, Liverpool, L3 2ET, Tel: 0151 231 4513 or Email: i.j.warren@ljmu.ac.uk

Website: www.tiig.info (data requests should be made through the website)